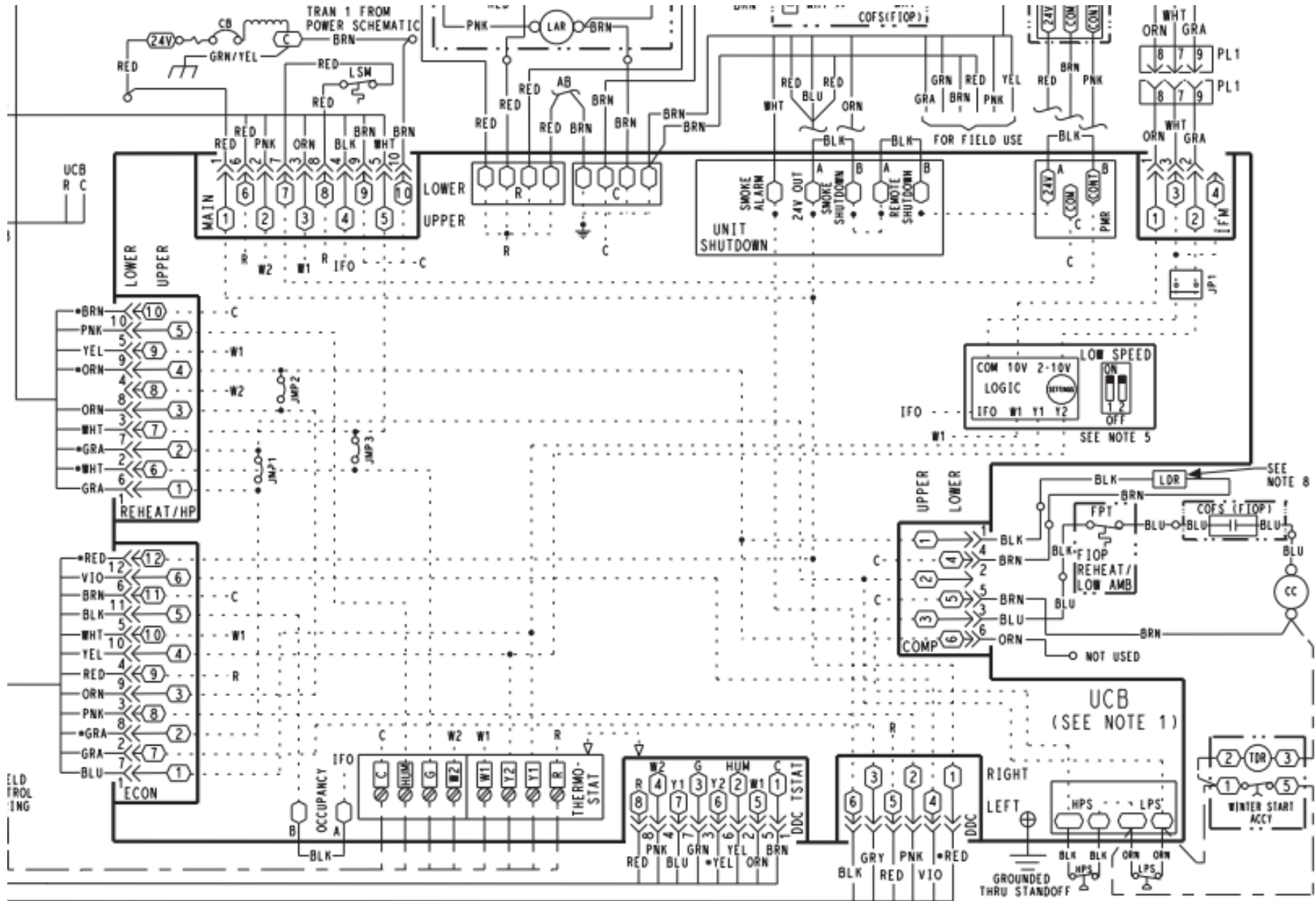
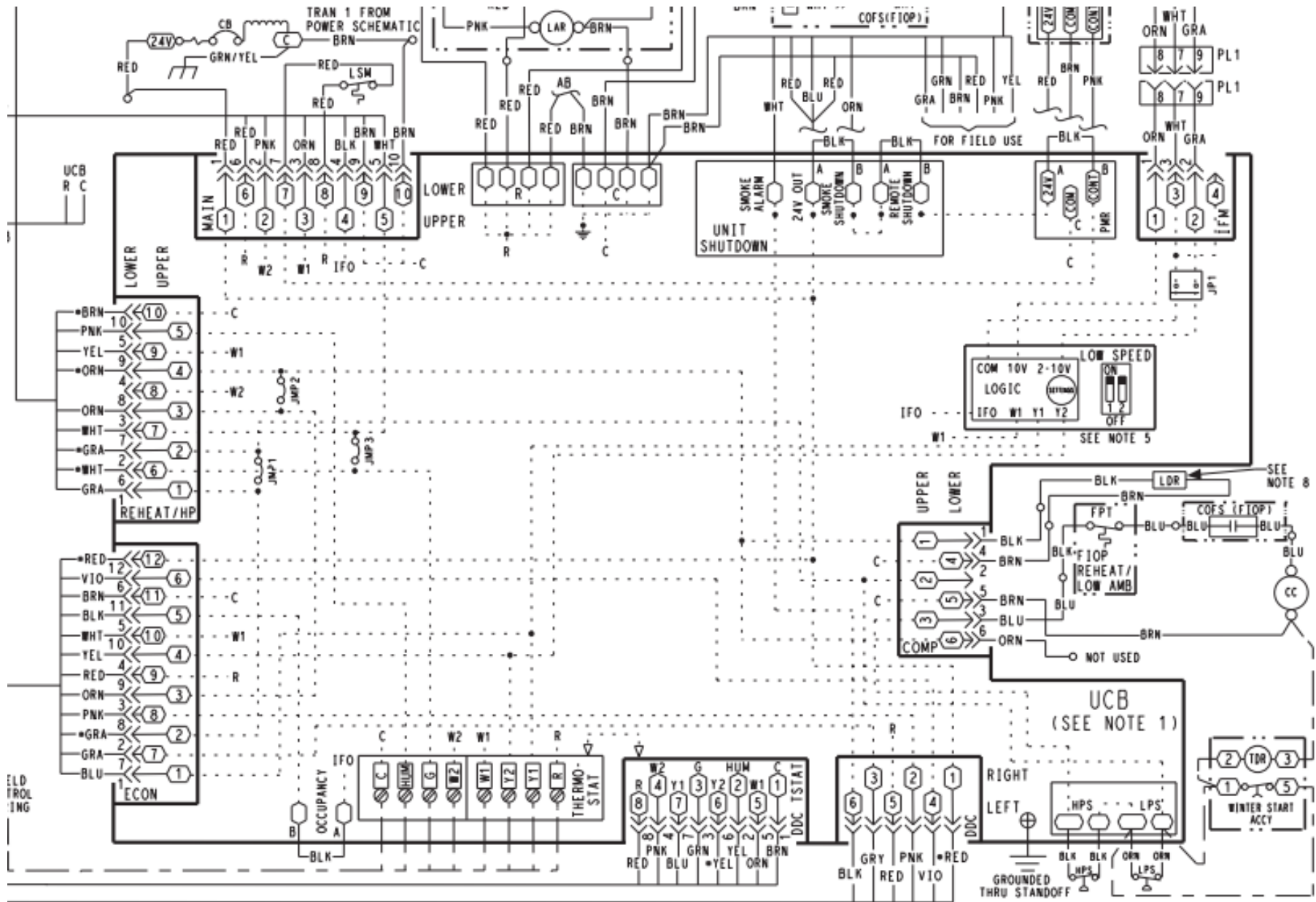


Circuit Board 24 VAC Common

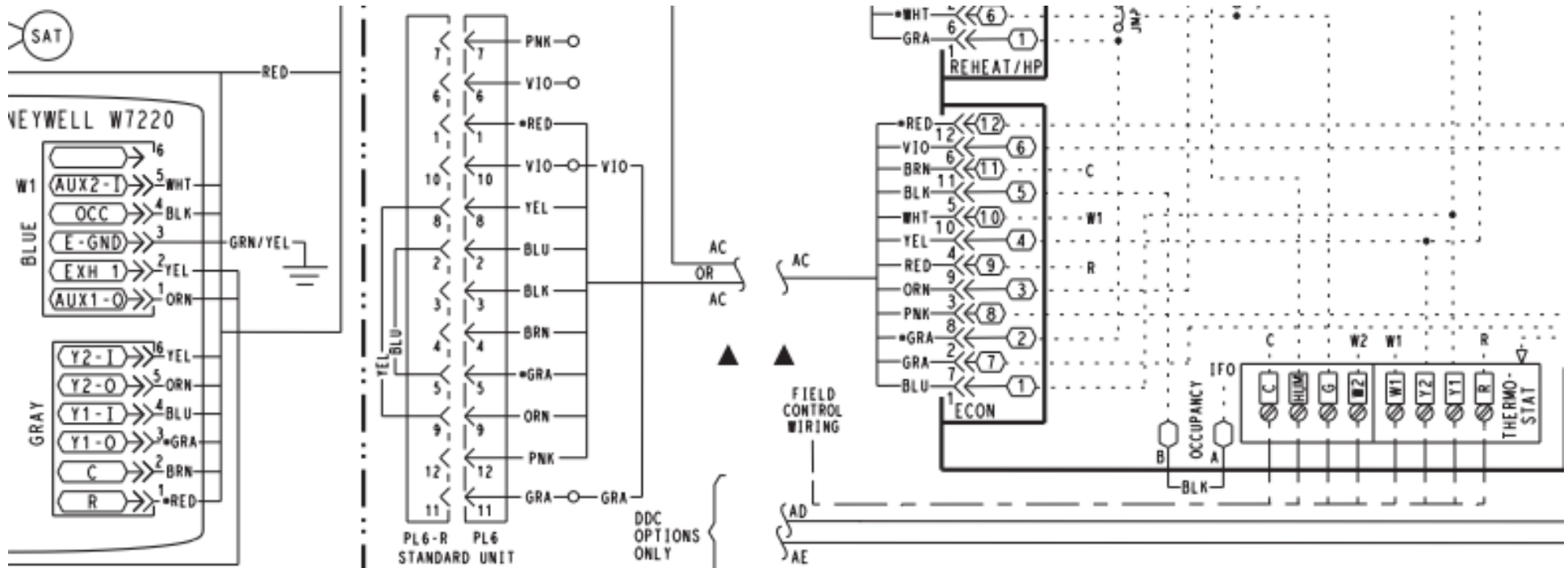
24 v common is any of the brown wires in control panel on any control board or component



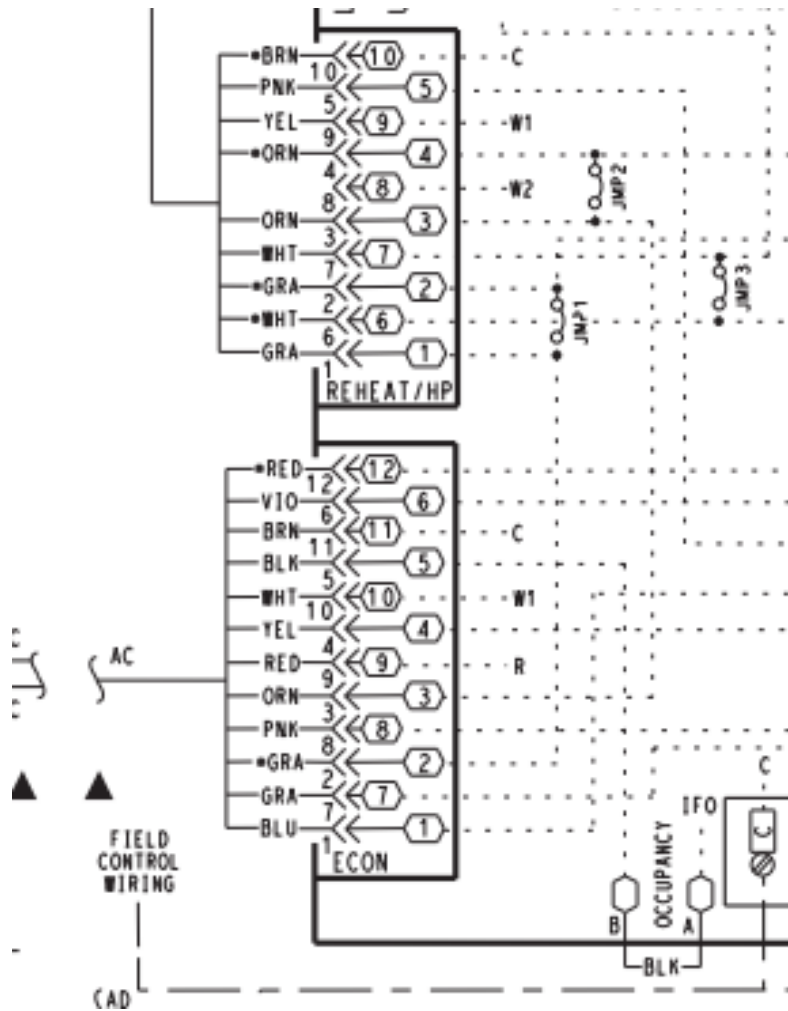
Circuit Board 24 VAC



Economizer Circuit – 1st Stage “Y1”

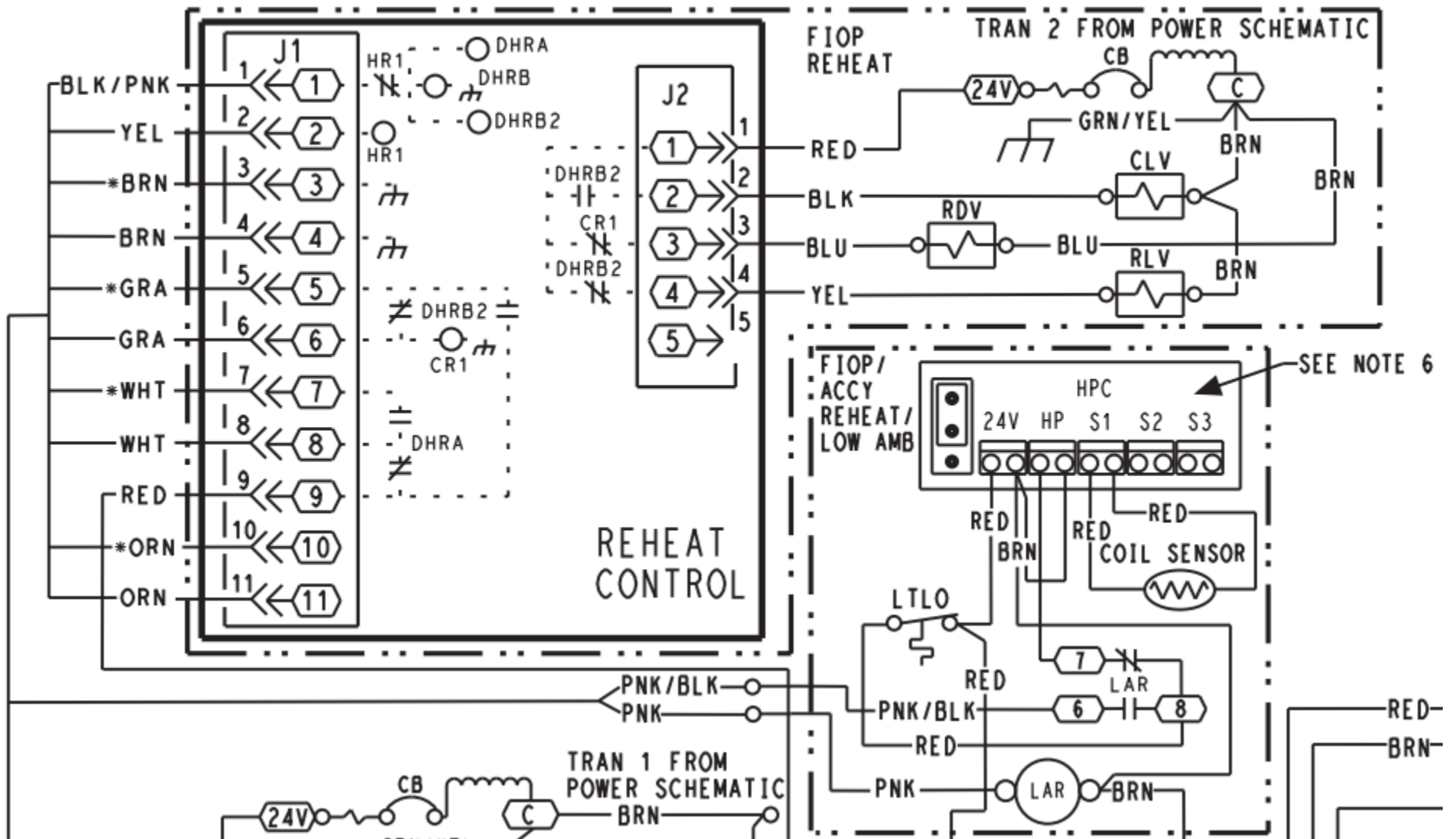


Control Board - Economizer/Reheat Pin - 1st Stage "Y1"

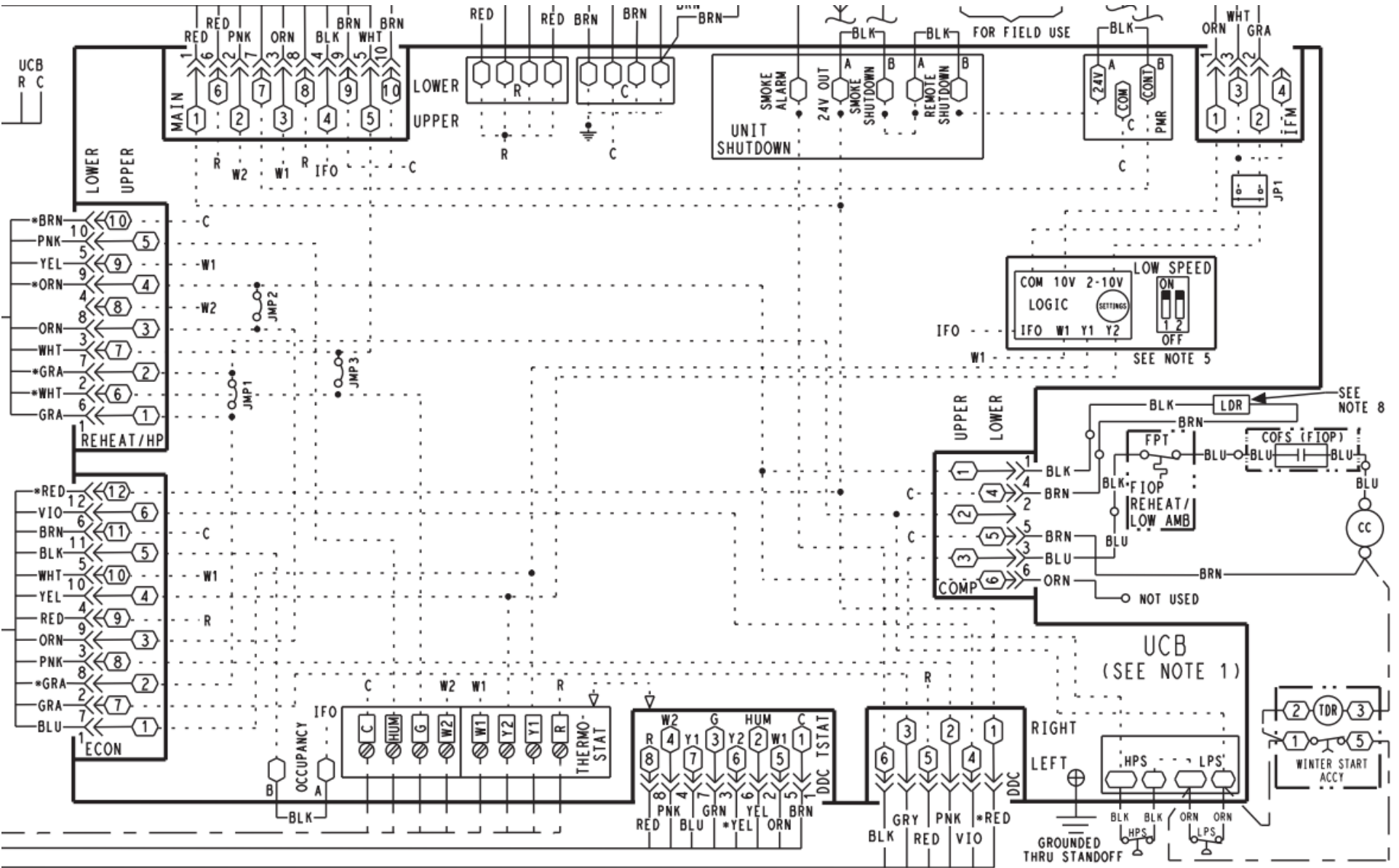


When HumidiMiZer Reheat board is added to a system. Jumper 1, 2 & 3 will be cut and removed.

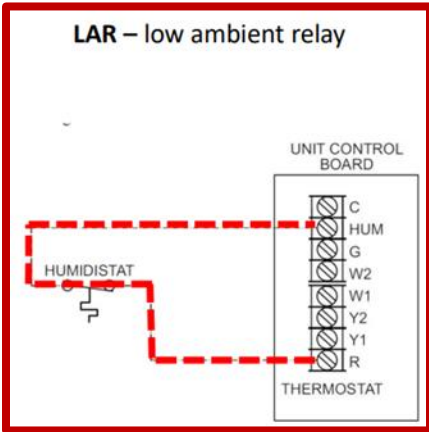
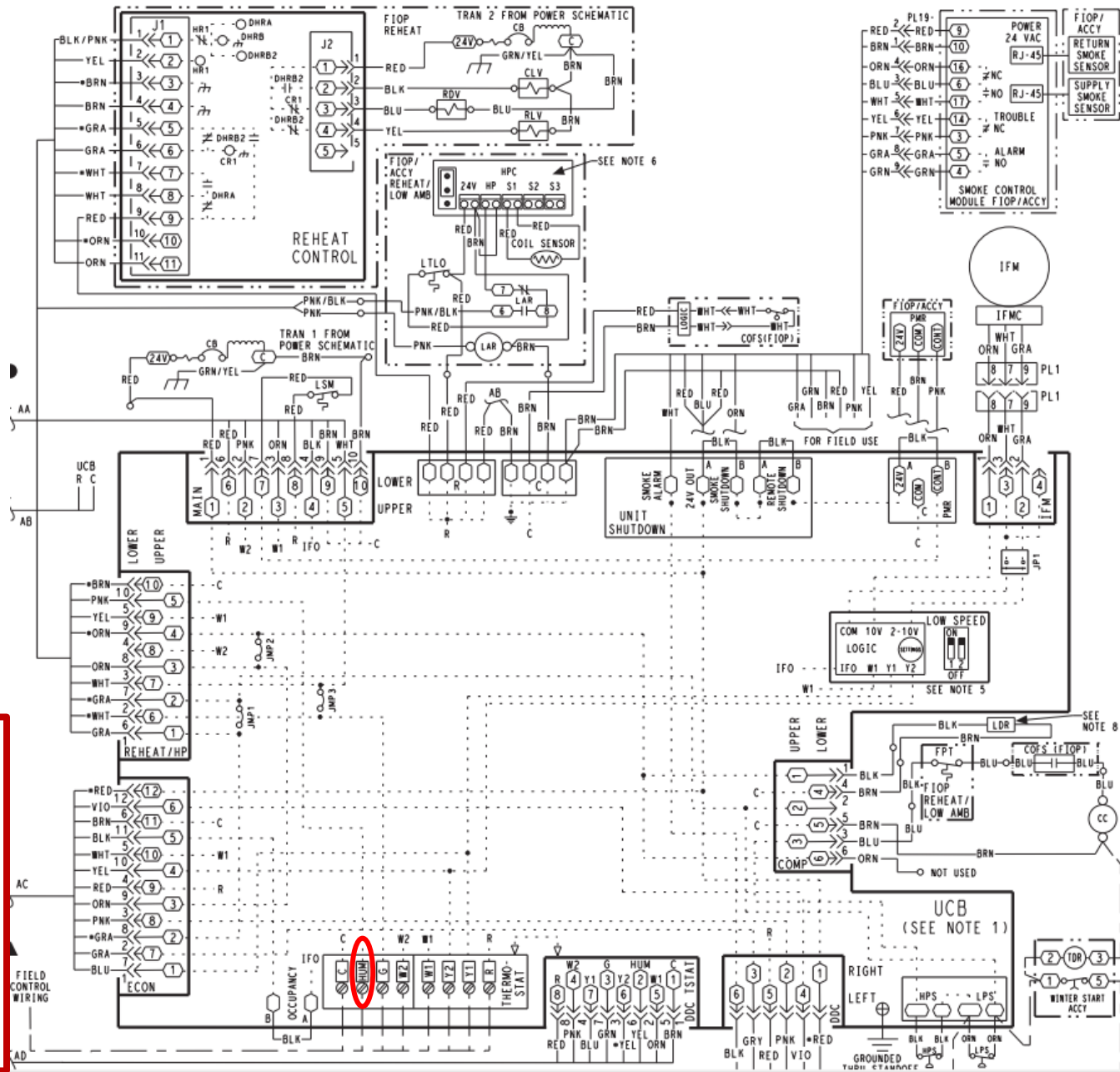
Reheat Control Board – Normal Mode (48FC04-06)



Compressor "Y1" Contactor Circuit

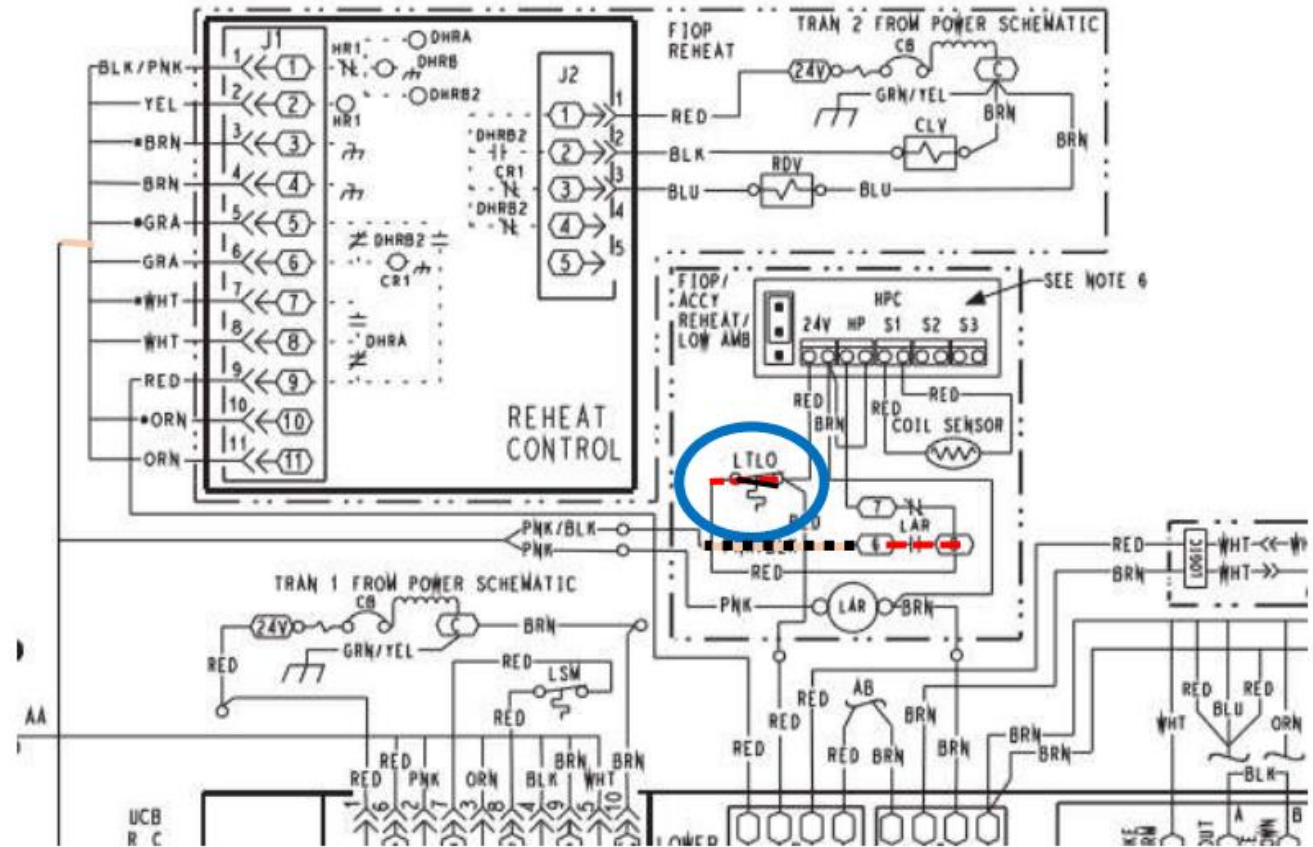


On the 48FC Series - Subcooling and Hot Gas Reheat Dehumidification Mode is energized through the thermostat (HUM) connection on main control circuit board.



REMEMBER!

Low temp lockout
switch locks out
subcooling & reheat
modes when the OAT
< 40 F.



Reheat Control Board – Subcooling Mode

